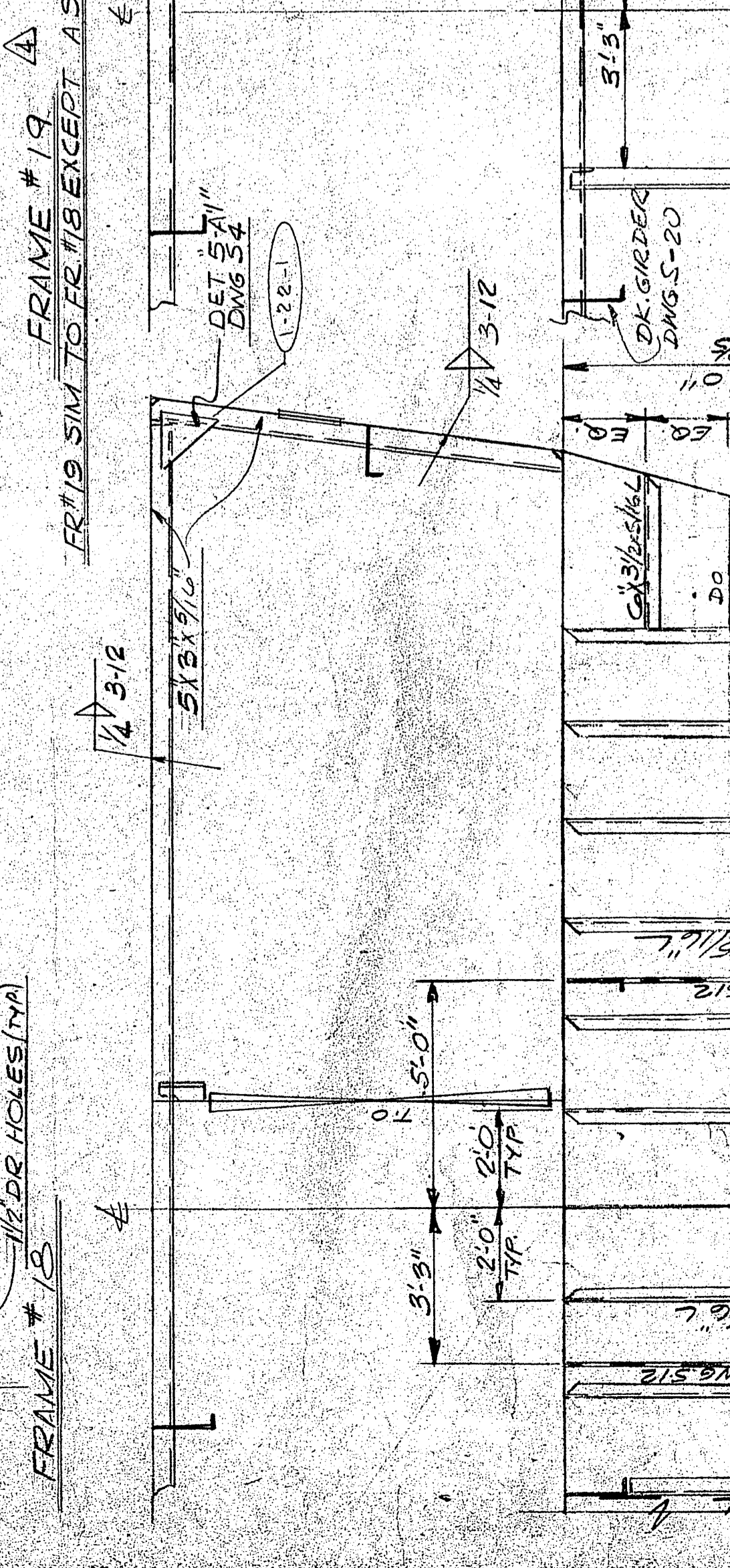
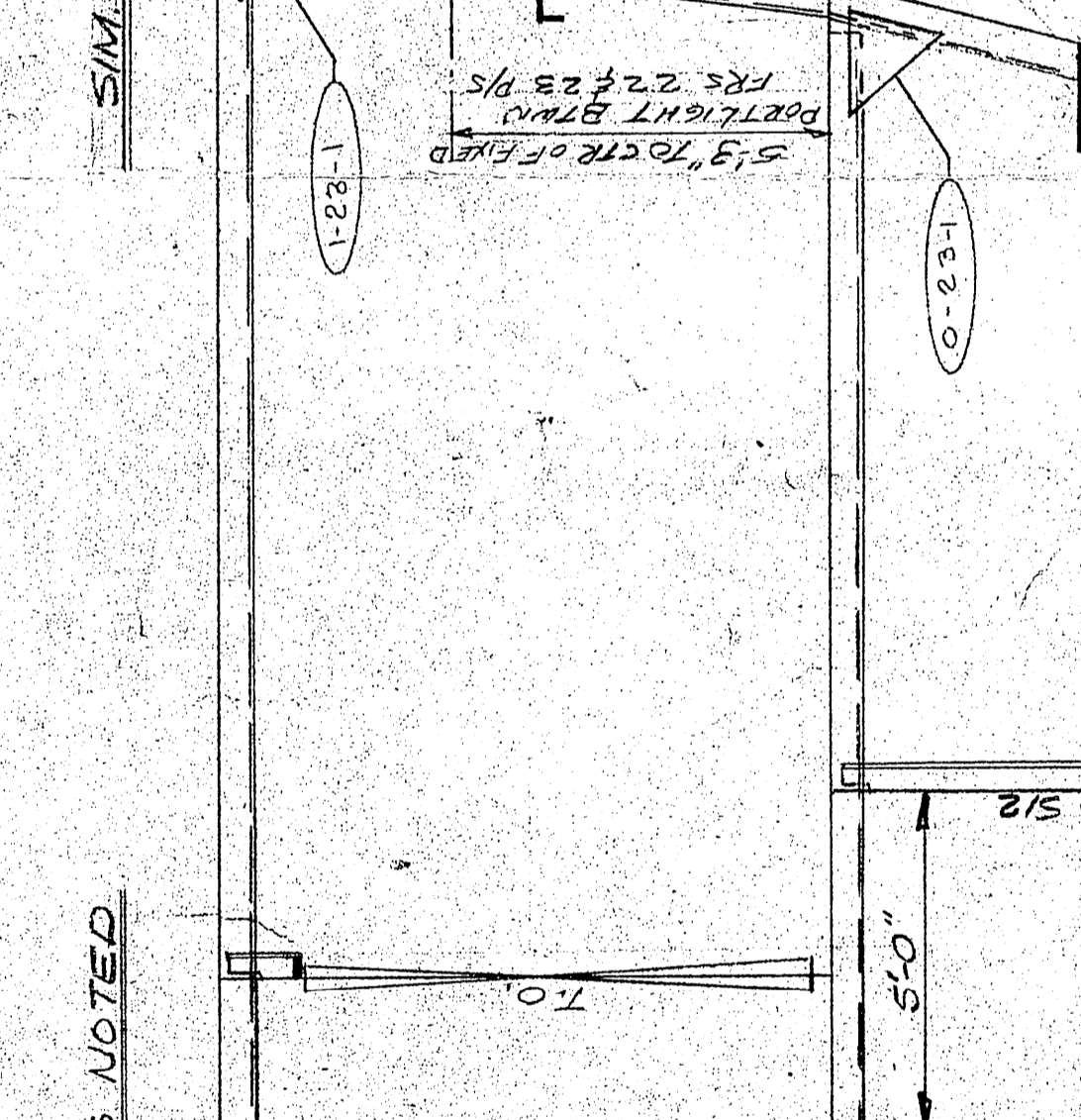
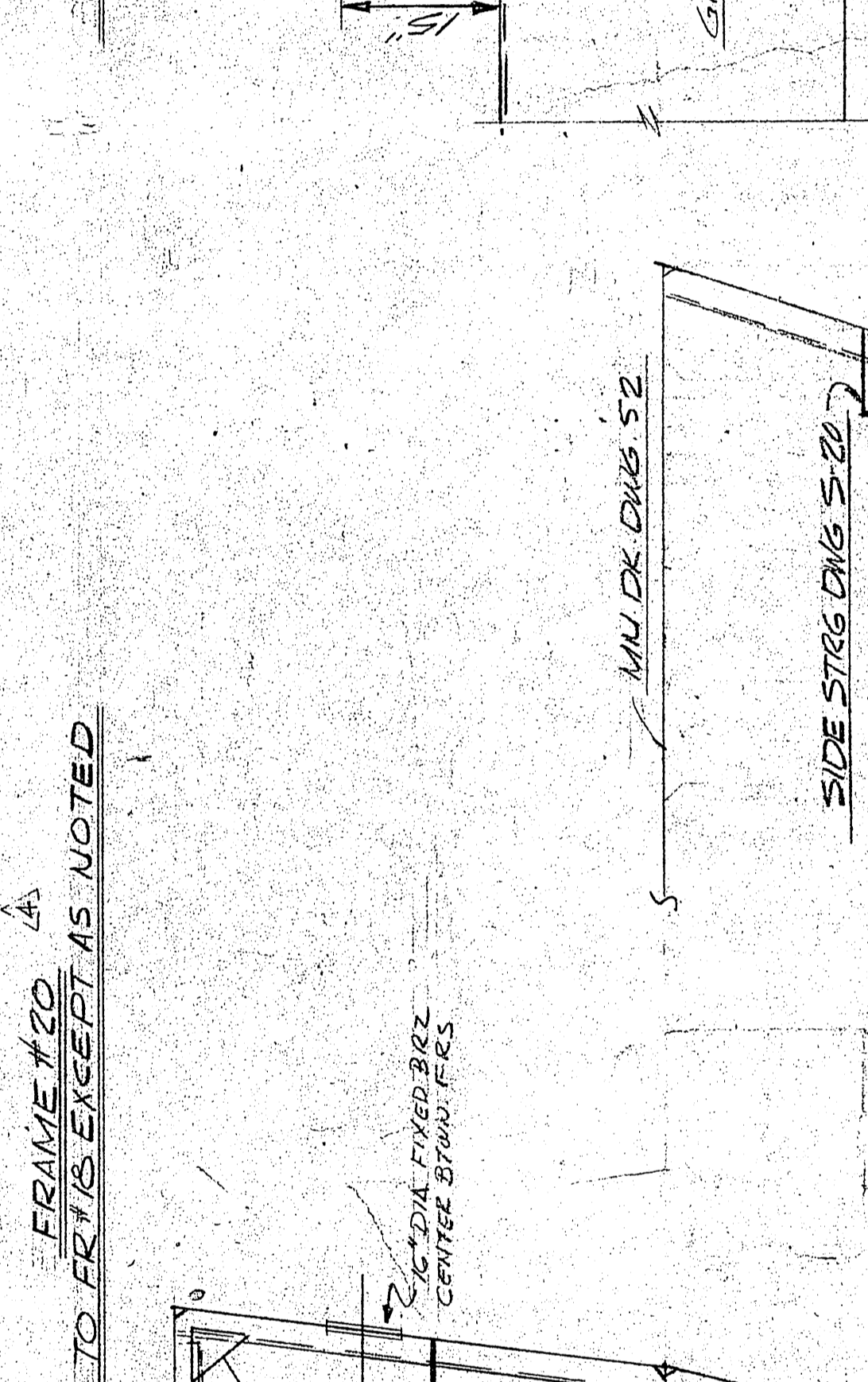
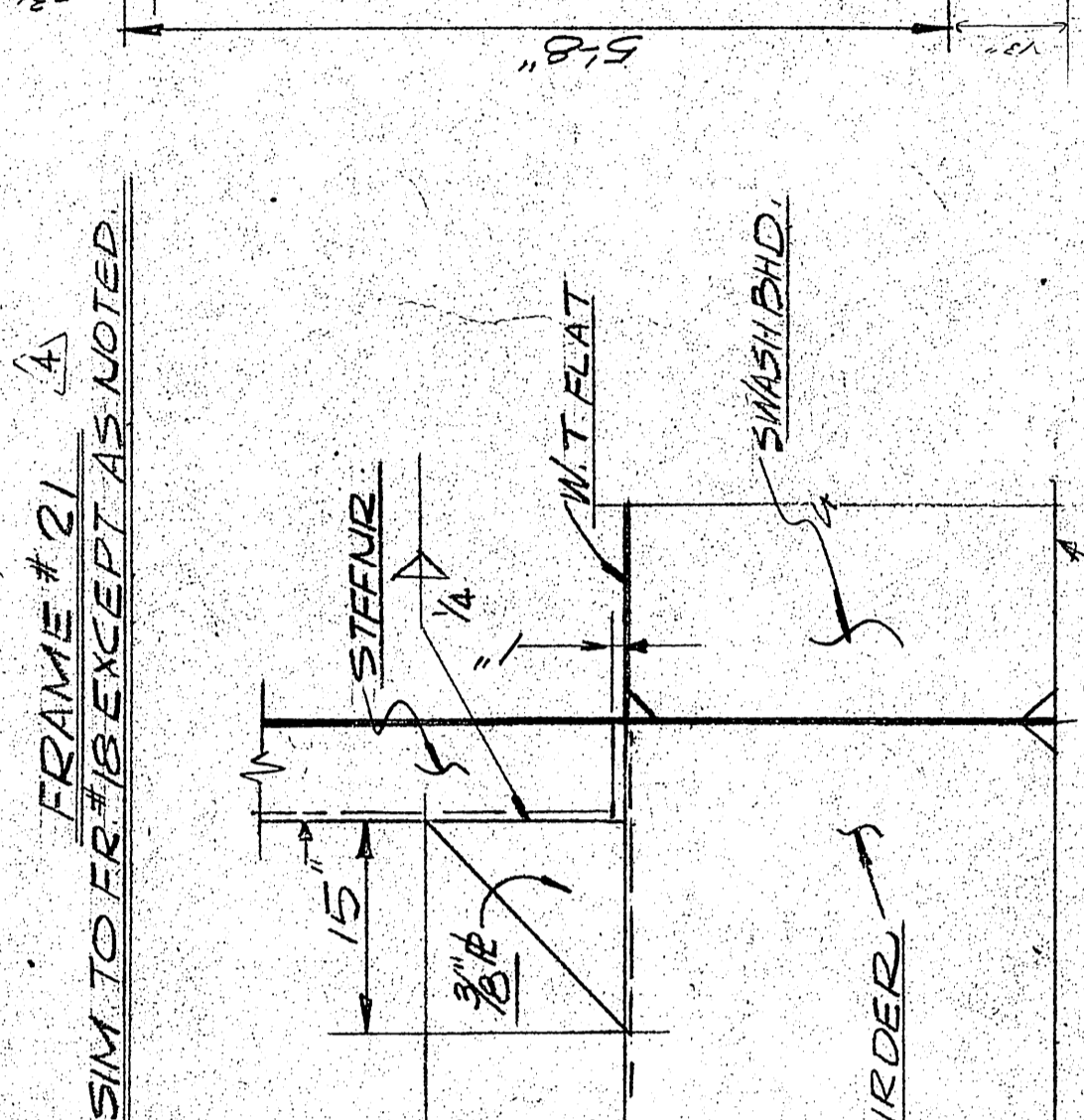
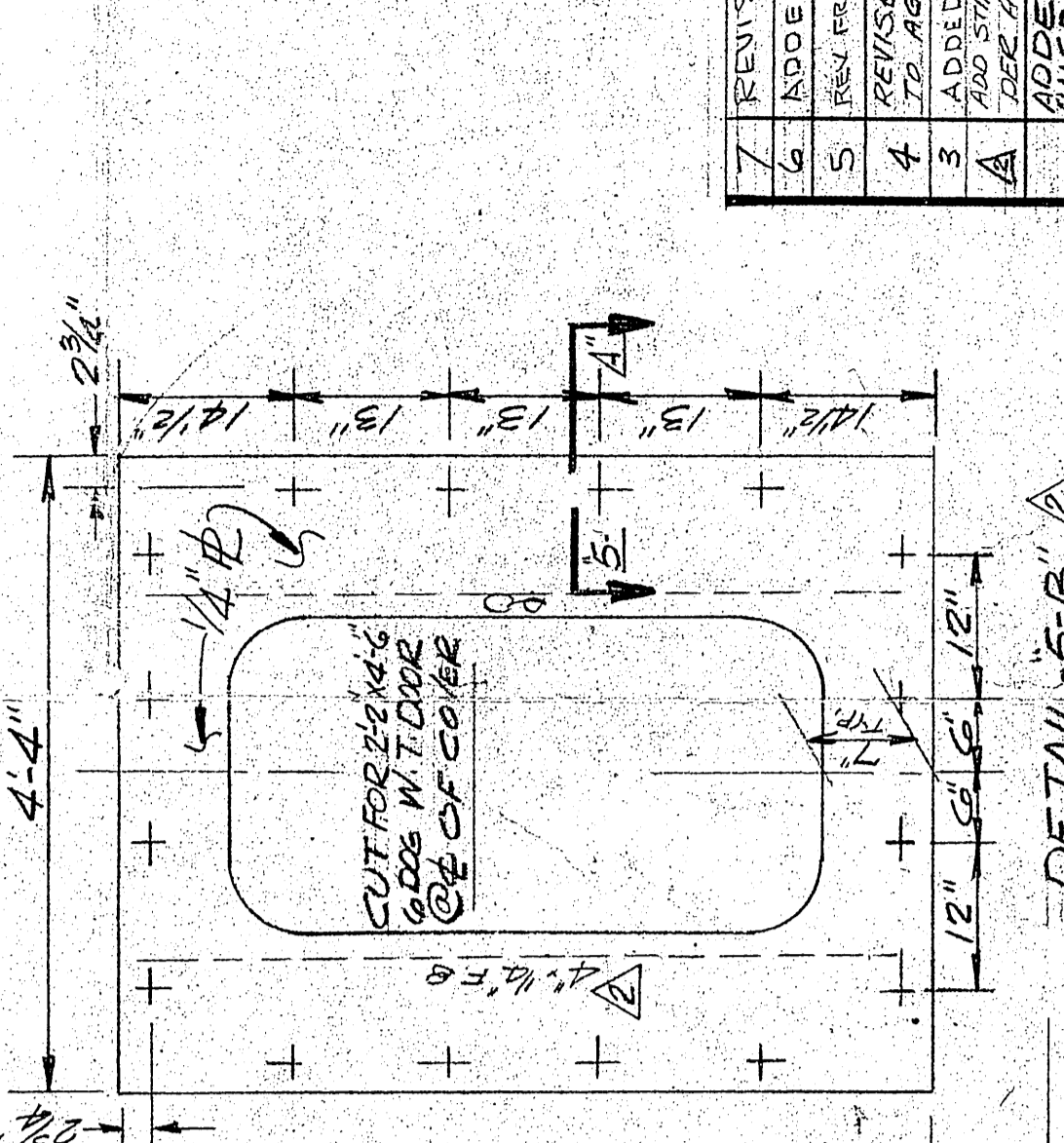
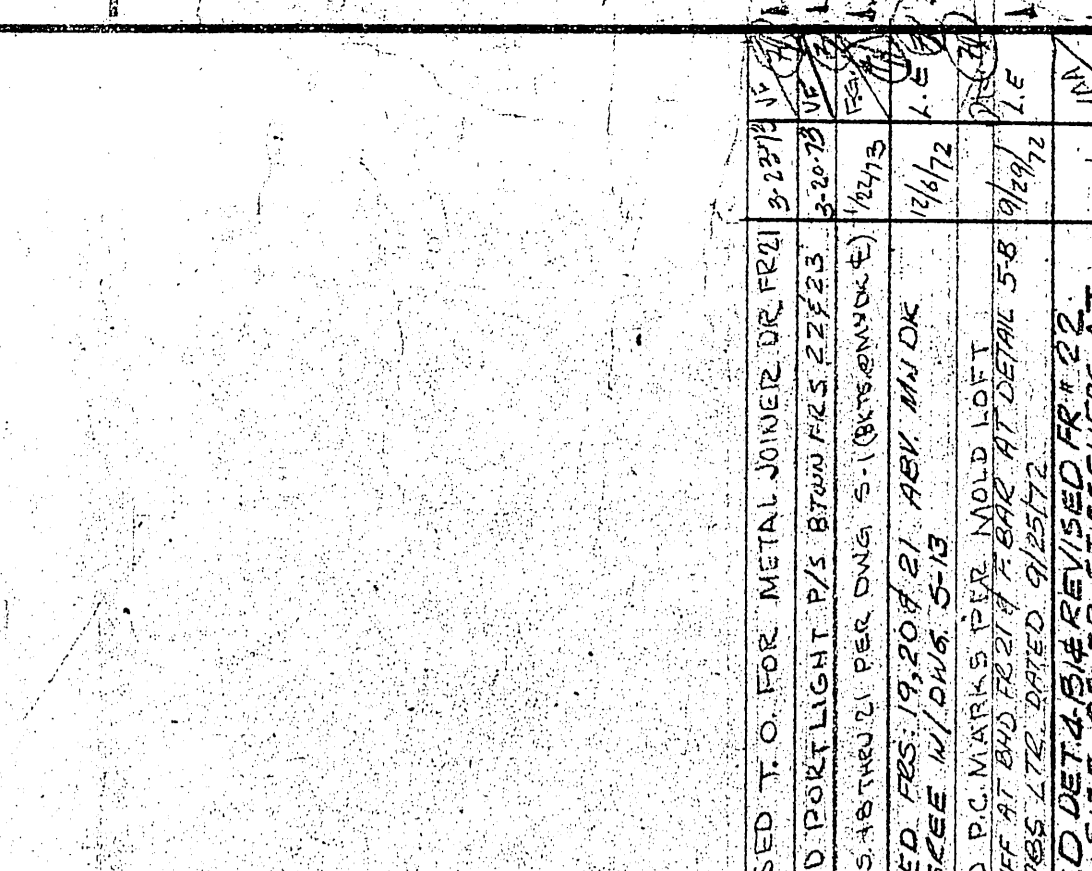
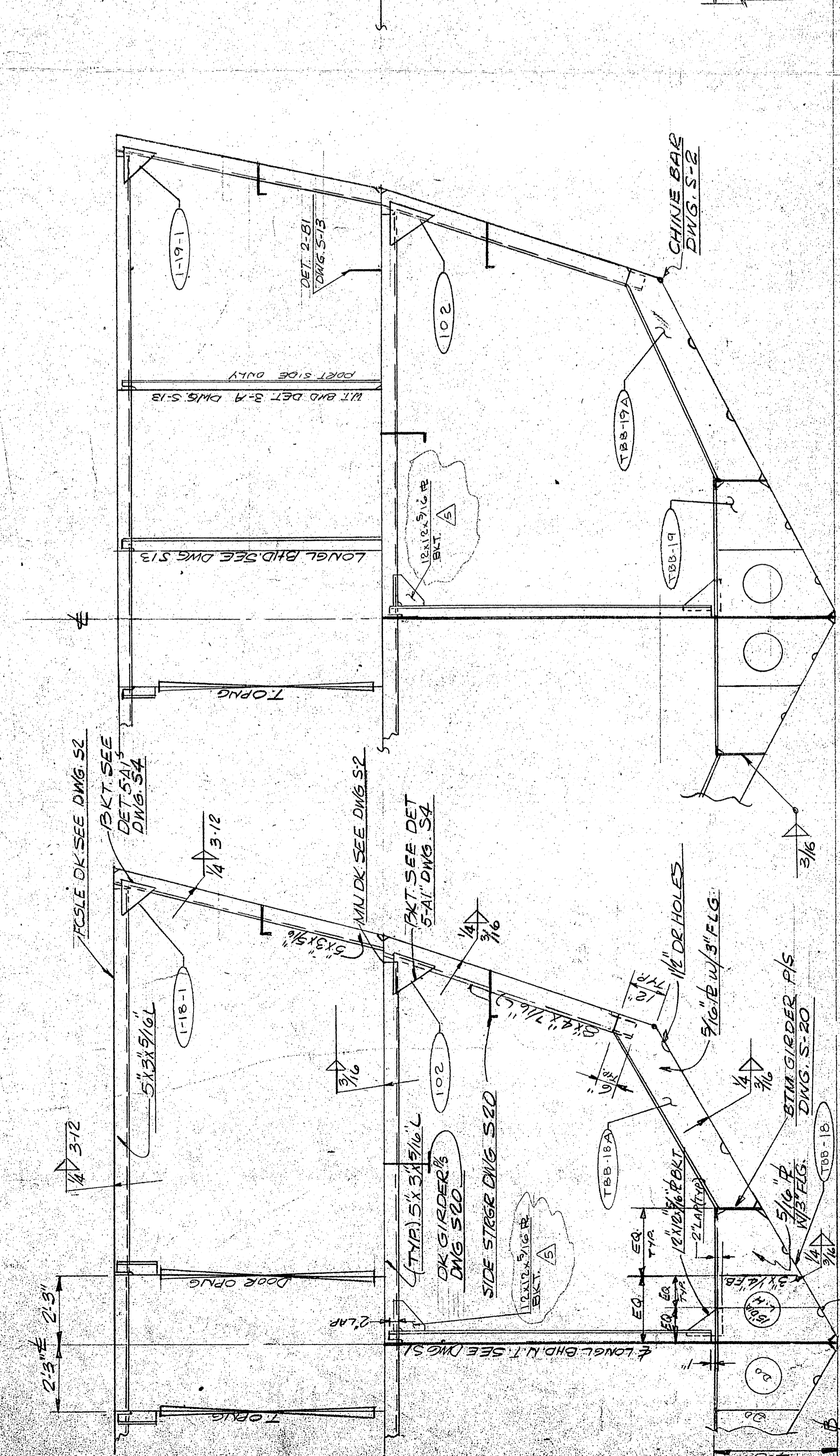
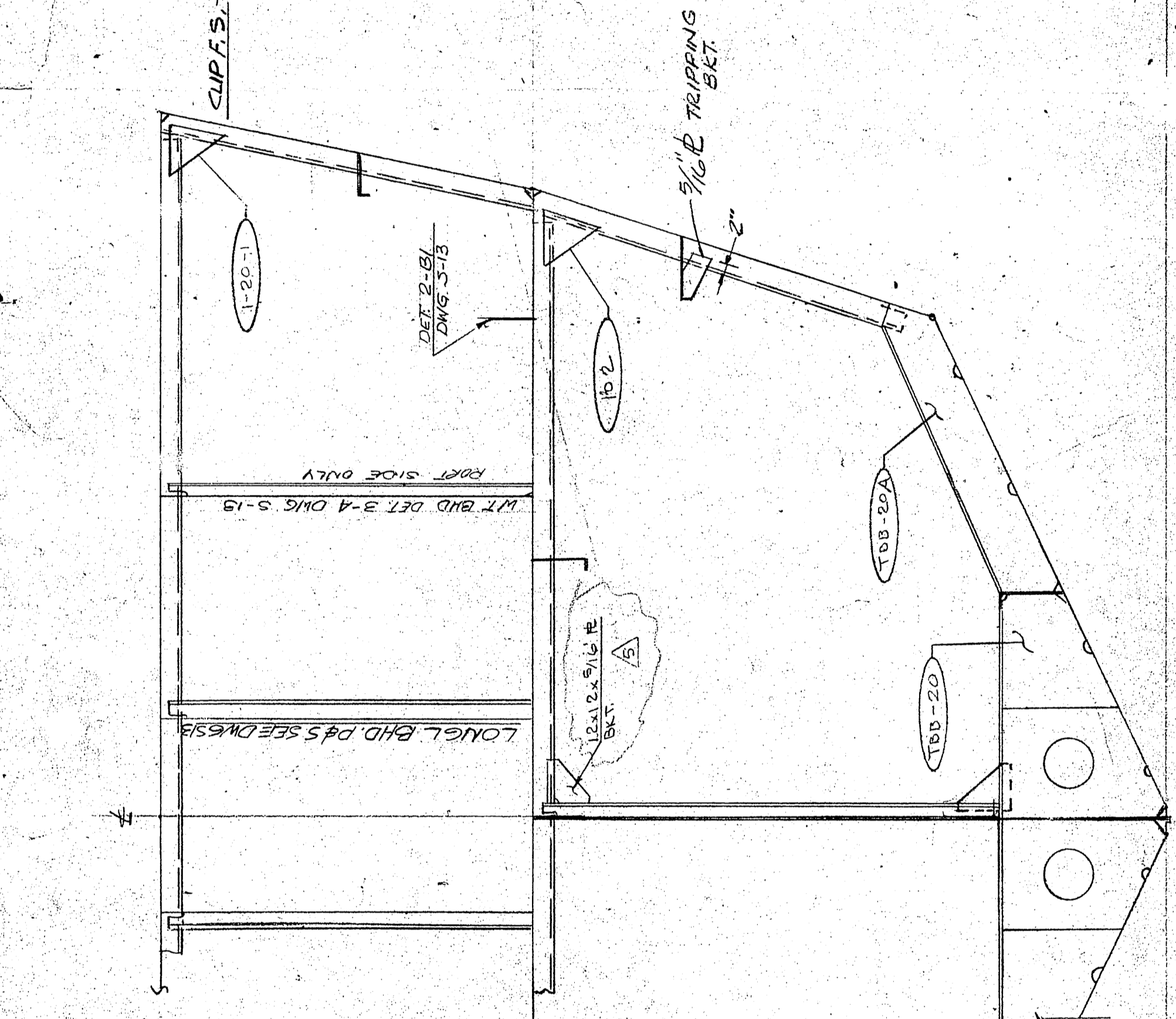
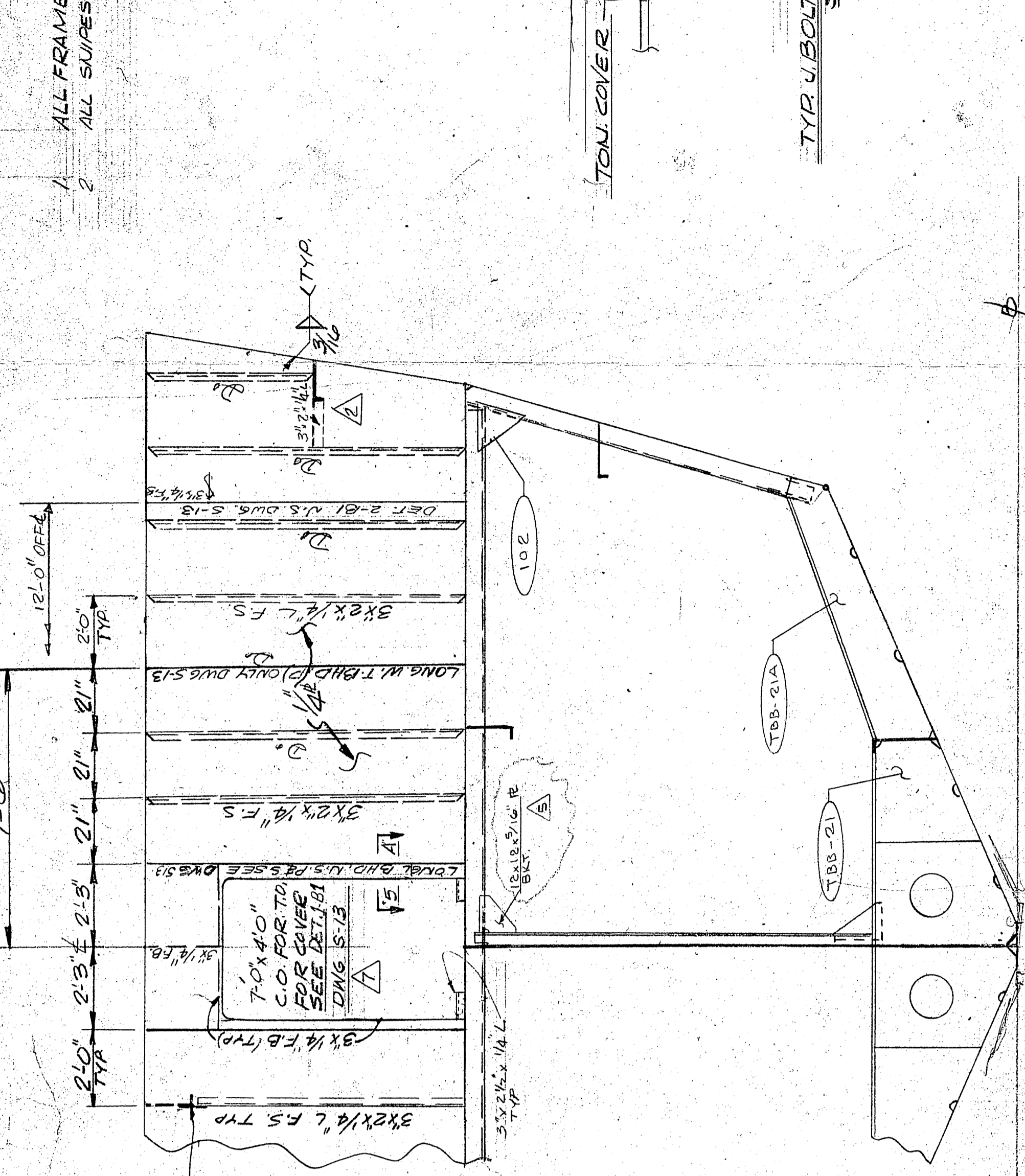


GENERAL NOTES
 1 ALL FRAMES ARE VIEWED LKS AFT.
 2 ALL SUAPES TO BE EXPLICITLY NOTED OTHERWISE



REV	DESCRIPTION	DATE	BY
7	REVISED TO FOR METAL JOINER USE PER 3-19-74	3-19-74	WJS
6	ADDED PORTLIGHT 1/2\"/>		
5	REVISED PER 19-20-71 ABK R/A OK	11/12	WJS
4	REVISED PER 19-20-71 ABK R/A OK	11/12	WJS
3	ADDED 1/2\"/>		
2	ADDED 1/2\"/>		
1	ADDED DETAIL 4-B REVISED PER 19-20-71 ABK R/A OK	11/12	WJS
Δ	ADDED DETAIL 5-B REVISED PER 19-20-71 ABK R/A OK	11/12	WJS
Δ	ADDED DETAIL 2-B REVISED PER 19-20-71 ABK R/A OK	11/12	WJS
Δ	ADDED DETAIL 1-B REVISED PER 19-20-71 ABK R/A OK	11/12	WJS

APPROVALS
 ABS
 USCG
 USPHS

OFFICE COPY

U.S. NAVAL SHIP SYSTEMS COMMAND
 WASHINGTON D.C. 20380

OCEANOGRAPHIC RESEARCH SHIP
 AGOR (UTILITY) CLASS

HALTER MARINE SERVICES, INC.
 P.O. BOX 6866 NEW ORLEANS, LA. 70169

FRAMES 18 THRU 23

SCALE: 3/8\"/>

SCALE	DATE	HAALTER	DWG. NO.
3/8\"/>			
10-17	3/5/72	WJS	512
LONG ENDS BELOW MAIN DECK			512
CONSTRUCTION PROFILE			51
SCANTLING PLAN			512
TITLE			DWG NO.
REFERENCES			

